

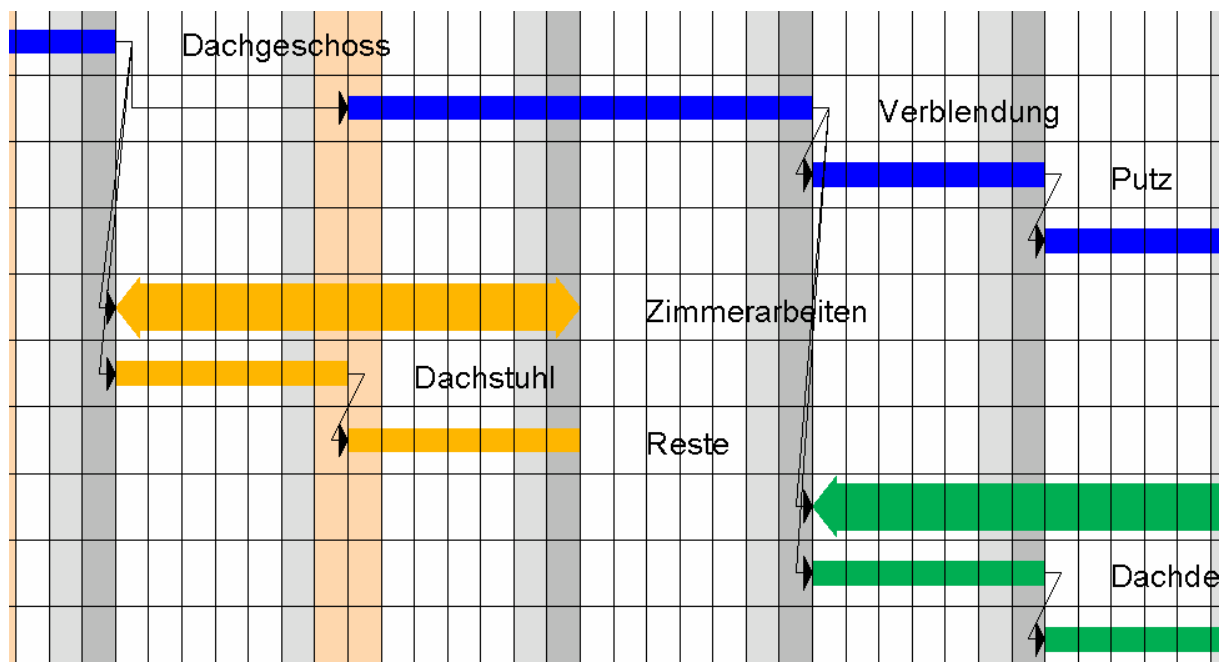
Description and Usage:

The GDL-Time-Schedule for Buildings is a simple and effective possibility to build time schedules as bar charts within ArchiCAD.

The advantage of the ArchiCAD environment is, that the printing can be in any scale you like and that you can add -without any problem- individual texts and graphical elements as well as elements created with ArchiCAD tools.

The GDL-Time-Schedule for Buildings has the following features:

- For ArchiCAD 8.0 upwards
- Input of up to 50 processes or crafts
- Calendar over 2 years
- Input of beginning date, spent time, bar colour, choice if main or secondary process, added text for every process.
- You can choose if the begin of a process shall follow after any other process.
- Input of a header text and a short building description
- Stretch or compress of the calendar zone
- Display of years, months, calendar weeks, and date days; highlighting of Saturdays, Sundays and public holidays (free choice of colour).
- Output of the last date of changes in the pln-file with time and name filename.
- Later including or removing of processes
- Text layout field with several parameters



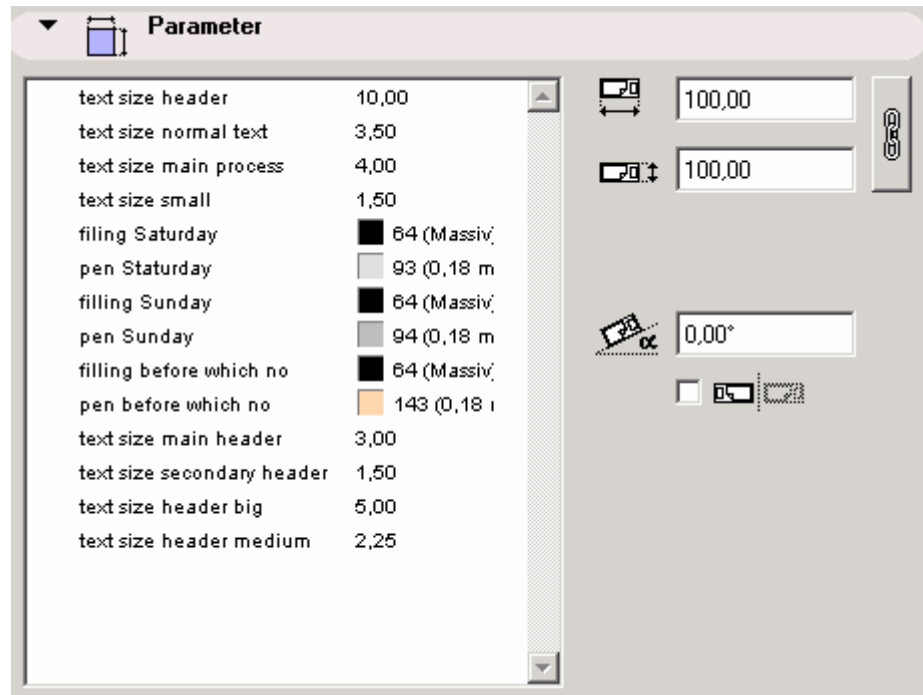
Default options 1

In the standard parameter interface the default settings are put.:

All other settings are put in the graphical User Interface on 14 pages.

Here you can take all changeable settings of the dates.

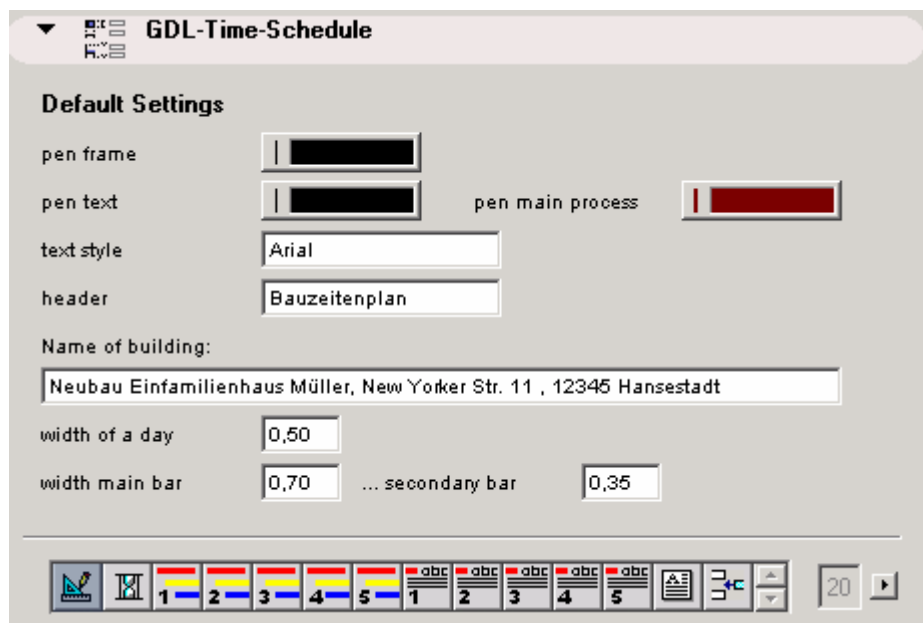
The page turning is done by a smart icon bar on bottom of the User Interface.



Default options 2

On page 1 "Default settings" of the des User Interface you can put in the following parameters:

- Pen frame
- Pen text
- Text style
- Header
- Name of building
- Width of one day (default:1)
- Widths of the main bar and the secondary bar.



Dates and crafts

Second page of User Interface:

- Number of crafts.
- Starting year
- Starting week
- Period in weeks: the total planned duration
- Define the crafts !: Here you can define 50 different kinds of crafts, which you choose on time bar 1-5
- Sheet-dimensions: shows the dimensions of the sheet in cm.

Time bar 1-5

The pages 3-7 of the User Interface:

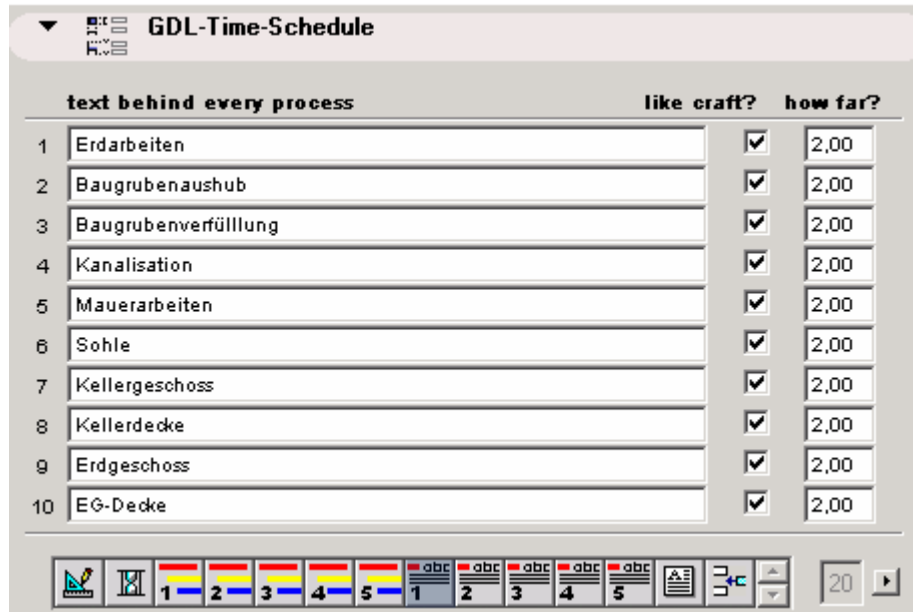
- process: here you can choose for every process one of the predefined crafts on the page before
- kind: the red „H“-button means „main process“, the blue „N“-button means „secondary process“
- how: the „date“-button means that you can put in a starting date, the tri-colour button means that the process follows on another one
- begin/followed/delay: If you have chosen before the date-button you can put in here the starting date; if you have chosen the other button before you can choose here on which process this one shall follow and with how much days delay
- begin: please use commas like the following example: 24,12,2004
- delay: “0” means followed on the next day, you can put in + or – values
- Colour: the colour for every process bar.
- On every page you can change the number of processes (right below).

process	kind	how	beginn/followed/delay	period	colour
1 Erdarbeiten	H	date	05,04,2004	89	Red
2 Baugrubenaushub	N	date	05,04,2004	5	Red
3 Baugrubenverfüllur	N	L	8 0	5	Red
4 Kanalisation	N	L	5 0	5	Red
5 Mauerarbeiten	H	date	05,04,2004	77	Blue
6 Sohle	N	date	05,04,2004	14	Blue
7 Kellergeschoss	N	L	6 0	7	Blue
8 Kellerdecke	N	L	7 0	7	Blue
9 Erdgeschoss	N	L	8 0	7	Blue
10 EG-Decke	N	L	9 0	7	Blue

Text behind every process 1-5

The pages 8-12 of the User Interface:

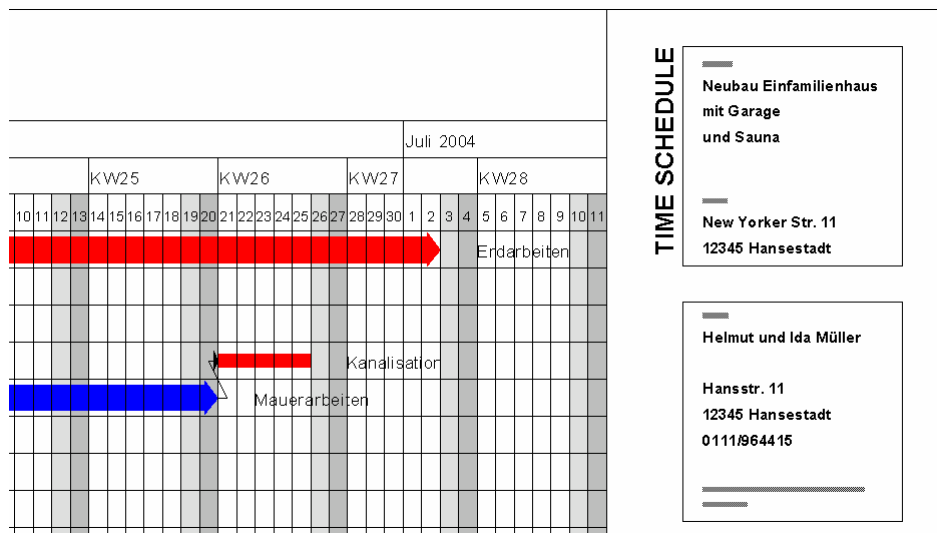
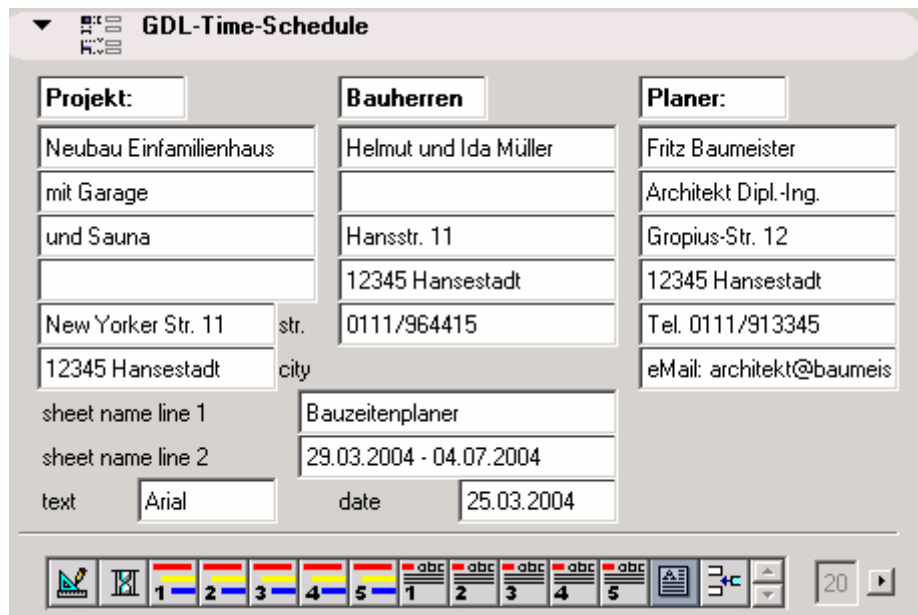
- text behind every process. This is the text that appears behind every process bar; if leaving empty, no text appears
- like craft? If you check these checkboxes, the text will be the same as the name of the craft far left in the same row..
- how far?: This value is the part of a days width for the distance that the text shall follow after the process bar.



Sheet layout

Page 13 of the User Interface:

- Put in the data of the project and other important facts. The input field can be used freely.



Put in or remove a process

Last page of the User Interface:

- Put in new process: check this box if you want to put in a new process between 2 others. The 2 new parameters appear. Choose where you want to add the new process and click on "go!".
- Remove a process: check this box if you want to remove a process between 2 others. The 2 new parameters appear. Choose which process you want to delete and click on "go!".

The screenshot shows a software window titled "GDL-Time-Schedule". It contains two main sections: "put in or remove a process" and "remove a process".

put in or remove a process

- put in new process:
- before which no.?: [dropdown arrow]
- go!:

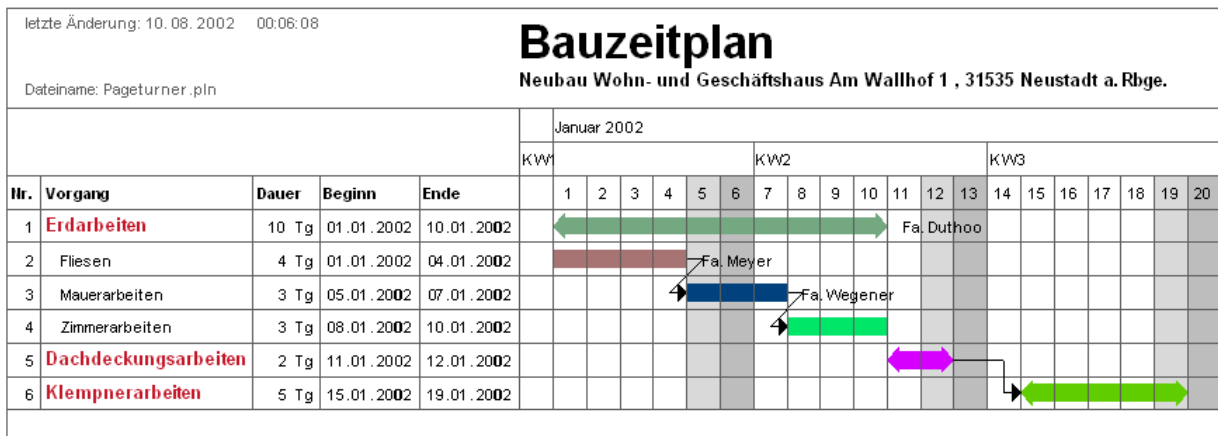
remove a process

- remove a process:
- which no.?: [dropdown arrow]
- go!:

At the bottom, there is a toolbar with icons for various functions and a page number "20" with a right arrow.

Placing

The click on OK and place the object in the floor plan. Changes are possible every time after this.



Tips and advise

- **Length and width and scale**

The size of the sheet in plan is independent from the scale always the same. The values of the dimensions can be put in on page 1 of the User Interface. If the sheet is too wide, you can shrink here the width of a day in the calendar zone by putting in a value less than 1.

If the total size of the ready print shall be smaller or bigger please choose in the printing dialogue another scale than the scale in plan.

- **Data security and Backups**

Save at the beginning of your work the file unconditional as pln-file with a new name.

Always save the file after every bigger change manually.

Always make a backup of the ArchiCAD-file because if the pln-file is lost all the work on the Library part is lost too.

- **Editing in ArchiCAD**

After finishing the time schedule it is possible to edit and complement the 2D-plan by doing something like:

1. Input of text, fillings, lines, library parts, bitmap pictures etc. with the ArchiCAD-tools for individual designs of the time schedule

2. Explode the library part in its single parts with the „explode“-command in the “Tools”-Menu. Afterwards you can edit every part of the time schedule with the ArchiCAD tools.

Attention: After this command it is not possible to edit the library part itself; so you must first make a copy of the library part or of the pln-file **before** you explode the object.

- **Processes before starting of the building process**

If a process is totally or partly before the defined start of the building process (Page 2 of the User Interface), the bars will be not shown or partly.