

BIMx PRO

Accessing BIM projects is now easier than ever!



▶ **GRAPHISOFT's vision is to bring BIM into common practice for the design and construction of buildings by enabling model-based workflow integration through innovative software solutions. BIMx, with its brand new BIMx Hyper-models, helps bridge the gap between the design studio and the construction site.**

BIMx "Hyper-model" is a unique technology that brings BIM into the dynamic touchscreen environment of mobile devices. Integrated, context-sensitive 2D and 3D building project navigation with smooth transitions helps even non-professionals find their way in a full BIM project.

BIMx PRO's smooth and context-sensitive transitions, overlay and trimming building models with the interactive slider provides a new way of understanding and coordinating building information models while adding an invaluable extra dimension to understanding the model when simply navigating in it.

With a direct link to the BIM project in the BIM authoring tool, BIMx PRO offers a smooth and easy communication workflow with stakeholders outside the office environment. GRAPHISOFT's cloud-based BIMx Transfer Service makes sure you get the latest updates fast and effectively.

Download the free BIMx app or buy the BIMx PRO app today to discover BIMx for yourself!



Fully Integrated BIMx Projects

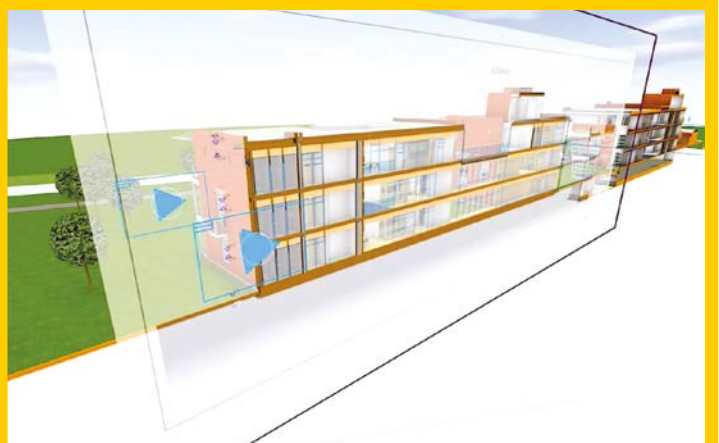
"Firstly, I should say that the work GRAPHISOFT has done on this is pretty impressive, especially the linking of sections/plans to the cutting planes in 3D. Everyone in our office was impressed with this."

Craig Baudin, Associate Director, Fender Katsalidis Architects, Australia



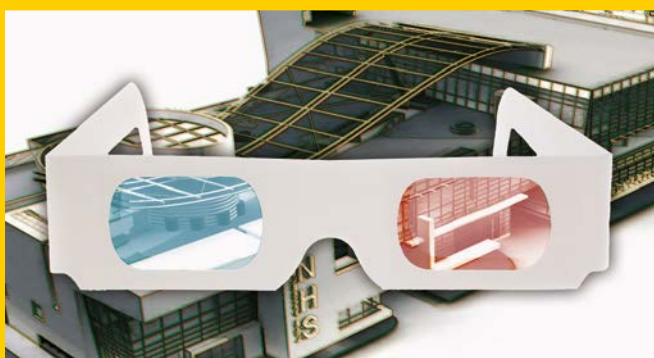
BIMx is included with ArchiCAD. Its true potential comes to life with the brand new BIMx PRO function set, providing access to full 2D project documentation within the 3D model context.

BIMx Hyper-models in Action



BIMx is right there for you in GRAPHISOFT ArchiCAD by default ready to use. Its intuitive user interface and cloud-integrated workflow makes it an unparalleled tool for every architect working with Building Information Models.

Immersive 3D with BIMx and ZEISS



BIM begins and ends with 3D, so experiencing it fully can be best achieved in "space." Turn on the stereo-view option in BIMx for an interactive 3D experience on your mobile device, and don't forget to wear 3D glasses! For the ultimate 3D desktop experience, check out the ZEISS cinemizer® OLED stereo glasses for BIMx.

▼ BIMx PRO in the AEC Workflow

"I have had a first spin through the BIMx Hyper-model software and you need to be congratulated on such a game-changing piece of software. It will change the way that the industry works in a big way."

Nathan Hildebrandt, Associate, Fulton Trotter Architects, Australia



▶ **Take your design with you wherever you go!**

▶ **Deliver your design intent with ease - even for non-professionals!**



BIMx Hyper-models contain not only the full 3D design project, but the entire construction documentation as well, which can be fully or partially updated from the office!

When attending client presentations, or for onsite project coordination, architects traditionally need to rely upon blueprints or PDFs. BIMx projects contain the full 3D design project and the entire construction documentation as well.

Many people find 2D and 3D difficult to work with simultaneously. Not anymore. With BIMx PRO's smooth transitions and context-sensitive information overlay, moving between dimensions becomes a breeze.

▶ **Use BIMx for onsite project coordination!**

Construction documentation can amount to hundreds of pages. Paper for printing, copying, and updating isn't cheap. And PDF can be painfully slow on larger documents. BIMx Hyper-models offer a unique and convenient combination of the 3D design model with the 2D documentation

in one digital model available on mobile devices, allowing you to:

- ▶ check the consistency of your design in 3D,
- ▶ overlay 2D details on the 3D model to check the 2D documentation's validity and better understand the design intent, and
- ▶ use powerful and easy-to-learn Hyper-models even on projects with hundreds of documentation sheets, in lightning speed!



BIMx 3D models for everyone. All your models can be viewed on your devices, and everyone else's devices.

BIMx

3D Content	3D Content
Stereo Mode	Stereo Mode
Gravity	Gravity
Floor-plan Cutaway	Floor-plan Cutaway
Egress Recognition	Egress Recognition
Cloud Connection	Cloud Connection
	2D Content
	Hyperlinked 2D&3D
	Smooth Transitions
	All-round 3D Cutaways
	2D in the Model Context

BIMx PRO



All BIMx 2D & 3D models are viewable on your own devices. Thanks to BIMx's revolutionary Hyper-model technology, all 2D documentation is interlinked with the 3D model.

License Types

Depending on your profession and needs, BIMx can support your everyday BIM workflow communication. In the office, on site, or with a client, BIMx and BIMx PRO bring stakeholders together to encourage productive and profitable communication. Clients will like the **BIMx** app because it will let them discover an **unlimited** number of 3D models on any device. Architects, on the other hand, might opt for **BIMx PRO** – to enable full access to **all** 3D models and hyper-linked **2D** documentation on their own devices. And of course, BIMx models can be shared -- so clients can access individual BIMx Hyper-models (including 2D and 3D content) on any of their devices.



BIMx
Free

View BIMx 3D models on all your devices



BIMx PRO
\$49.99

ALL 2D & 3D models on *ONE device



BIMx
Model Sharing
\$49.99

ONE 2D & 3D model on ALL devices

In-App purchase available to SHARE BIMx models

* Up to 5 iOS devices linked to your Apple ID account

For more details, contact any GRAPHISOFT office, or visit: www.graphisoft.com/bimx/

Brazil

GRAPHISOFT Brazil
Phone: +55 11 4314-5887
E-mail: brazil@graphisoft.com
Web: www.graphisoft.com/br

Japan

GRAPHISOFT Japan Co., Ltd.
Phone: +81 3 55 45 3800
E-mail: info@graphisoft.co.jp
Web: www.graphisoft.co.jp

China

GRAPHISOFT Beijing Rep. Office
Phone: +86 10 6310 2808
E-mail: mail@graphisoft.cn
Web: www.graphisoft.cn

Mexico & Latin America

GRAPHISOFT Mexico
Phone: +52 5687 1460
E-mail: info@graphisoft.mx
Web: www.graphisoft.mx

South-East Asia

GRAPHISOFT Hong Kong Ltd.
Phone: +852 3975 3260
E-mail: mail@graphisoft.hk
Web: www.graphisoft.hk

Germany

GRAPHISOFT Deutschland GmbH.
Phone: +49 89 746 430
E-mail: mail@graphisoft.de
Web: www.graphisoft.de

Russia

GRAPHISOFT Representative Office
Phone: +7 495 510 2503
E-mail: mail@graphisoft.ru
Web: www.graphisoft.ru

United Kingdom

GRAPHISOFT UK Ltd.
Phone: +44 1895 876 222
E-mail: mail@graphisoft.co.uk
Web: www.graphisoft.co.uk

Italy

GRAPHISOFT Italy
Phone: +39 041 932388
E-mail: italia@graphisoft.com
Web: www.graphisoft.com/it

Singapore

GRAPHISOFT Singapore
Phone: +65 6549 7601
E-mail: mail@graphisoft.sg
Web: www.graphisoft.sg

United States & Canada

GRAPHISOFT North America, Inc.
Phone: +1 617 485 4200
E-mail: info@graphisoft.com
Web: www.graphisoftus.com

Image Credits:

NHS OFFICE COMPLEX, 3100 S. FIGUEROA STREET LOS ANGELES, CA 90007 | Architect: paastudio 17437 Posetano Road Pacific Palisades, CA 90272
Graphisoft Park, G Building – Architects: Ferenc Cságoly, Ferenc Keller, Építész Stúdió Architects, Budapest, Hungary
Graphisoft Park, F Building, Architects: Lukács and Vikár Architects, Budapest, Hungary

GRAPHISOFT, ArchiCAD and BIMcloud are registered trademarks of GRAPHISOFT. All other trademarks are property of their respective owners.



GRAPHISOFT